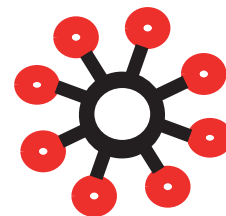


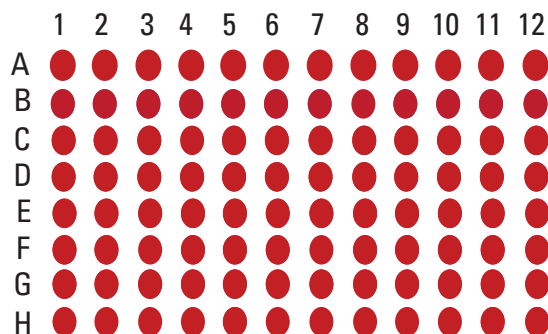
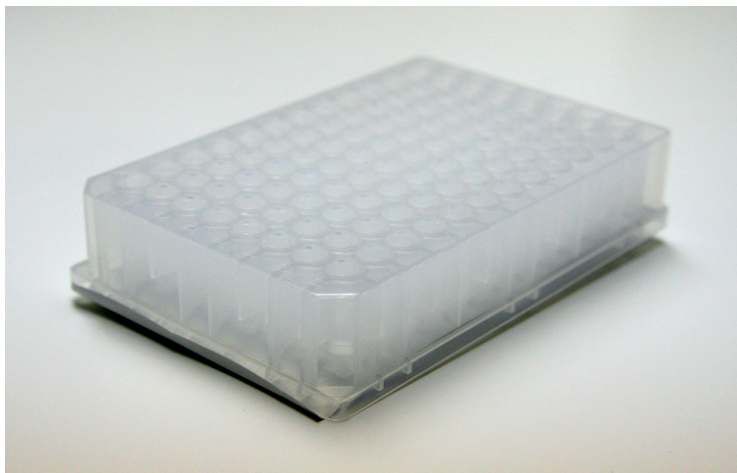
Resin Seeker

TOYOPEARL® AF-rProtein A HC-650F 96-well Plate Kit

P/N OC41MDAFPA-650F



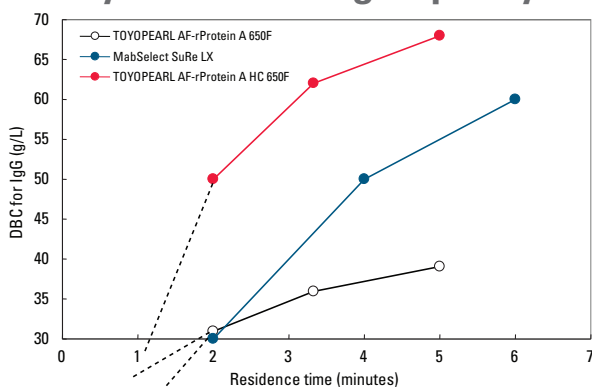
A method development kit for High Capacity Protein A Chromatography



20 µL resin volumes

Each kit includes both a collection and a wash plate.

TOYOPEARL AF-rProtein A HC-650F Dynamic Binding Capacity



Resins: TOYOPEARL AF-rProtein A HC-650F
TOYOPEARL AF-rProtein A-650F
MabSelect SuRe™ LX

Column size: 5 mm ID × 5 cm

Mobile phase: 0.02 mol/L sodium phosphate, 0.15 mol/L NaCl, pH 7.4

Residence time*: 2, 3.5, 5 min

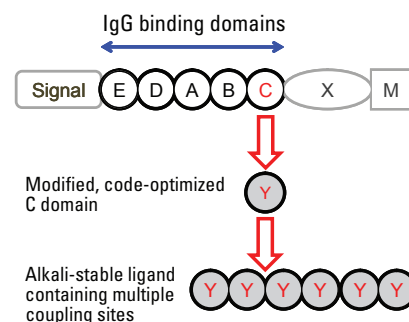
Detection: UV @ 280 nm

Sample: human IgG @ 1 g/L in mobile phase

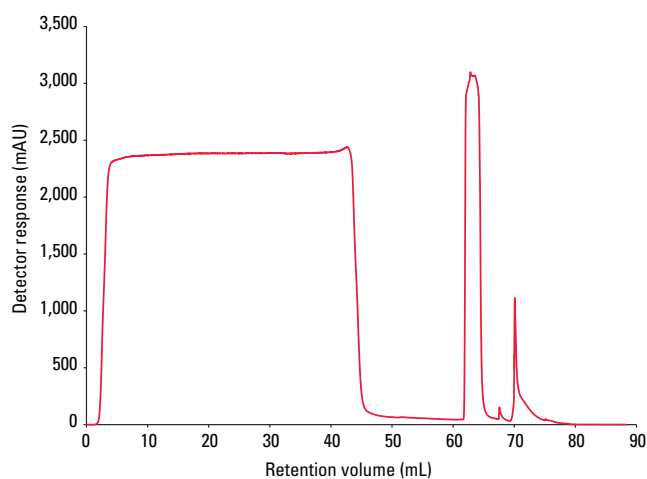
*MabSelect SuRe DBC data taken from product brochure (2, 4, and 6 minute residence times).

DBC was calculated at 10% breakthrough

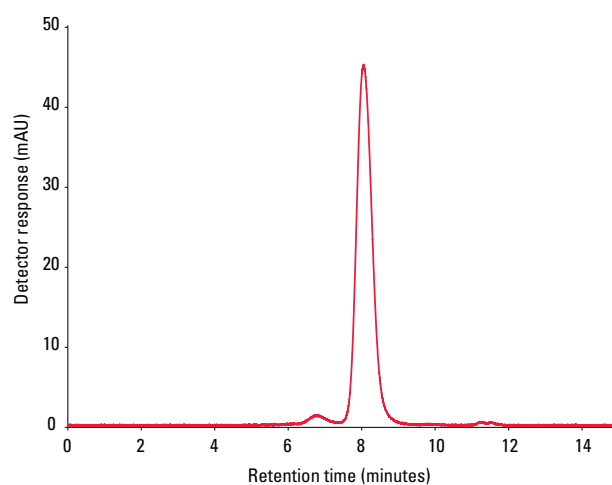
Resin Structure



TOYOPEARL AF-rProtein A HC-650F Performance



Column size: 5.0 mm ID × 9.7 cm (1.90 mL)
Mobile phase: A: 20 mmol/L Na₂HPO₄, 150 mmol/L NaCl, pH 7.39
 B: 100 mmol/L Na citrate, pH 3.0
 C: 0.1 mol/L NaOH
Flow rate: 116 cm/hr (0.38 mL/min)
Residence time: 5 min
Detection: UV @ 280 nm
Sample: crude feedstock (titer = 3.0 g/L)
Sample load: 41.2 mL



Column: TSKgel® G3000SWXL, 5 μm, 7.8 mm ID × 30 cm
Mobile phase: 0.1 mol/L phosphate, 0.1 mol/L NaCl, 0.05% azide, pH 6.7
Flow rate: 1 mL/min
Detection: UV @ 280 nm
Injection vol: 1.0 μL
Sample: protein A purified mAb

Load	% Monomer	% Recovery
35 g/L	96.1	87.2
50 g/L	96.8	86.5
65 g/L	96.1	89.5